



## General Info

The IDLS series is designed for military, law enforcement and civilian applications (Electronic News Gathering – ENG). IDLS represents a complete solution for a real time communication link, including manned and unmanned aircraft, marine vessels and land vehicles. The IDLS is designed to optimally meet customer requirements.

## System capabilities

- Available in different frequency bands: L, S, C, X and Ku.
- Long range – up to 250 Km (LOS)
- Extended range beyond LOS via relay
- Video format – PAL/NTSC
- Downlink data can consist of analog or compressed video & telemetry
- Full duplex command uplink and video & telemetry downlink
- Telemetry data – RS 232/422
- Automatic tracking capability
- Remote frequency change capability
- Bandwidth use can be optimized for the specific data transmission
- Two sub-carriers for Audio & Data (one embedded and one optional)
- High reliability, low life cycle costs

## The IDLS consists of the following units:

- **Ground Data Terminal (GDT)**
- **Air Data Terminal (ADT)**

## System specifications

True FM modulation	
Video sensitivity	-86 dBm
Telemetry Sensitivity	-90 dBm
Frequency Tuning Step	1, 2, 5 MHz
Frequency Stability	± 4 ppm

## Power requirements

Input voltage	14-28 VDC
Input current for ADT	4 Amp max
Input current for GDT	4 Amp Avg

## Mechanical

GDT weight	45 Kg
ADT weight	~3.5 Kg
GDT installation	Tripod/Mast /Vehicle

\* ADT dimensions are defined by customer requirements.

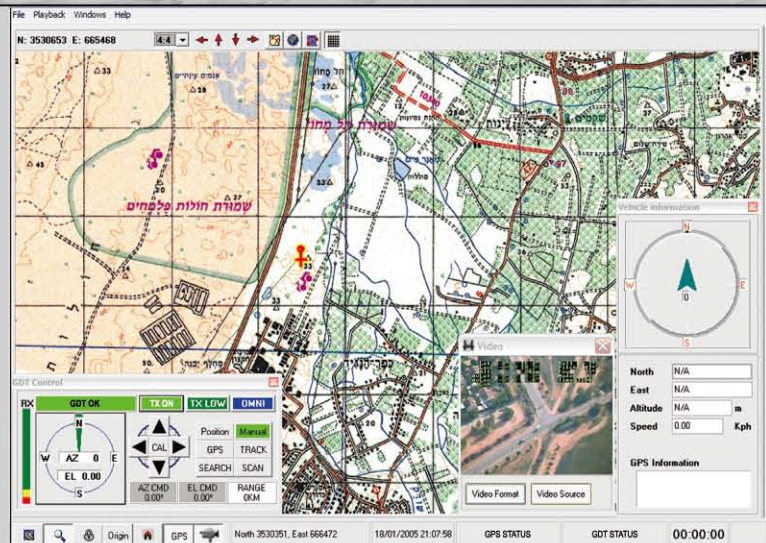
## Environmental

Temperature	-30°C to 55°C
Humidity	Up to 95%

## Software Application

The IDLS software is responsible for the system operation, tracking the Vehicle and displaying its status. The system displays vital tactical information such as:

- Digital map
- Real time presentation of the video as received from the payload mounted on the remote platform
- Status of the GDT antenna: alignment, tracking, signal strength, etc.



Commtact Ltd  
POB 169 Yavne ISRAEL  
Tel. 972-8-9433602  
Fax. 972-8-9433603

\*Designed to meet MIL-STD-810E and MIL-STD-461

\*\*ICD for all products is available by request

Specifications subject to change without prior notice. Typical values shown.